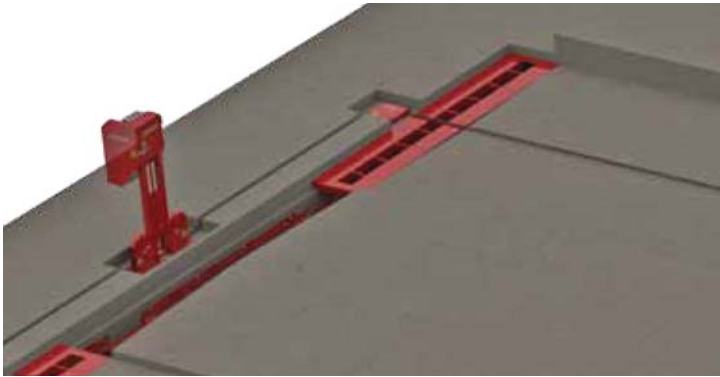


DO THE JOB RIGHT...

Good planning and the right accessories will make your system look better, work better and last longer. Products like our modular gutter covers give a professional quality finish to your new barn, while making service access easy. Your factory trained Jamesway Dealer will work with your barn planner to ensure that your equipment is properly selected and placed for optimum performance and for ease of service. Jamesway supplies your concrete contractor with all the information he needs to do the job right.



Modular Gutter Covers are used to cover the manure gutter in the scrape alleys. These 12" or 18" wide heavy duty modules are laid across the gutter width, allowing easy removal of individual segments. The 9" opening allows manure to fall through yet tractors or skidsteer loaders can easily drive over.



Doing the job right is easy with proper planning. Keyed edges on the cross gutter are ready to accept Jamesway Modular Gutter Covers. The same notch supports light duty walkway covers between the scrape alleys.



You may choose to run the chain on top of the alley floor (shown) or in a recessed track. Jamesway floor tracks are made specifically to fit Dura-Chain. These super-duty tracks are dry fitted and locked in place before the floor is poured, ensuring laser-line precision.

A raised walkway with covered wheels stays clean and dry.



Visit our website for more information on these Jamesway products!

MANURE SYSTEMS:

- Alley Scrapers
- Vertical Electric Pumps
- Electric Prop Agitators
- Vertical PTO Pumps
- Piston Transfer Pumps
- Cross Gutter Systems
- Barn Cleaners

MANURE APPLICATION:

- Non-Steer Spreader Tanks
- Steerable Spreader Tanks
- Injection Systems
- Truck Mount Tankers
- Lagoon Pumps
- Prop Agitators
- Loading Pumps

FEEDING SYSTEMS:

- Silo Unloaders
- Feeders
- Conveyors
- Hammer Mills
- Power Feed Carts
- Bedding Choppers

Jamesway Farm Equipment products are designed in conformance to ASAE Standards S354.4 "Safety for Farmstead Equipment" and S318.15 "Safety for Agricultural Equipment". Some photos in this brochure have safety shields removed or open to show additional detail on equipment features. Never operate equipment without safety shields in place. Jamesway continually updates and improves products and reserves the right to make changes in the design, specifications, and to add improvements to our products, without incurring an obligation on equipment purchased.

JAMESWAY FARM EQUIPMENT, INC.
12 Route 249
St. Francois-Xavier (Quebec) JOB 2V0
Tele: (819) 845-7824
Fax: (819) 845-5153

DEALER:

JAMESWAY FARM EQUIPMENT, INC.
USA Warehouse
15383 State Hwy. 131
Tomah, WI 54660